

Screen

and

Screen

Again

Screen and Screen Again – Moving Image Artworks for Public Places
March – May 2001: Bath, Bristol, Exeter, Gloucester, Plymouth

Colin Andrews, Adam Black, Tony Hill, Joe Magee, Monika Oechsler,
Lulu Quinn, Philip Walker, John Wood and Paul Harrison

Screen and Screen Again is a programme of short video works made for exhibition on television monitors in unusual public locations. There is an historical precedence of artists working with the physical and conceptual properties of the television dating back to the 1960s and the pioneering work of Nam June Paik. The artists' works share a concern with performance or duration and are constructed to surprise or intrigue viewers perceptions. The artists have used a range of techniques to produce their work, from underwater cameras and digital imaging to the manipulation of an archive film print.

Colin Andrews has developed a number of video art works for public spaces, galleries and festivals. He has exhibited in Britain, France, Germany, and Italy and has recently received an assistance grant from the Scottish Arts Council.

Adam Black is a recent graduate from Bath Spa University College who completed a poignant documentary entitled Living Memory exhibited at the Victoria Art Gallery, Bath.

Tony Hill makes experimental short films which explore space and time in unusual ways. His work has won awards at international film festivals and has been broadcast on network TV in many countries. He is currently Professor of Film at the University of Derby.

Joe Magee works as an image-maker for publications such as The Guardian, Liberation and The New York Times, and has developed commissions for the Watershed Bristol, Diesel Stylelab London, and PVA Bridport. Magee has recently been given an Animate! Award by the Arts Council of England/Channel 4.

Monika Oechsler has exhibited extensively in the UK, Europe and USA. Recent shows include SELECT at Arnolfini Bristol/Camden Arts Centre London; Video Cultures, ZKM Museum for Contemporary Art, Karlsruhe, Germany; The Other Side of Zero, Video Positive Tate Gallery Liverpool and Video as a Female Terrain, Steirischer Herbst, Joaneum, Graz, Austria.

Lulu Quinn has produced numerous video works for public spaces and galleries and taken part in Housewatch events at the Royal Festival Hall and the Lux Centre. Group exhibitions include Tate Gallery St Ives, Site Gallery Sheffield, and ICA London.

Philip Walker is an artist who works with the moving image. Holding Tank was commissioned by the Watershed in 2000 and has been screened at Stroud Valley Artists film and Video and has also been selected for the Language of Water show in The Hotbath Gallery, Bath. He has recently shown monitor-based work in Station, Bristol and is currently working on a documentary.

John Wood and Paul Harrison produced their first collaborative video in 1993 and since then their work has been shown internationally in galleries, film/video festivals and on television. In 2000 the artists exhibition Obstacle Course and other works was held at Firstsite, Colchester and John Hansard Gallery, Southampton and Cartography at Spike Island, Bristol. Their work has also recently been included in The British Art Show 5 and Lets Go to Work, Marcel Sitcoske, San Francisco.

Screen and Screen Again is a collaboration between Picture This Moving Image and Watershed Media Centre. As part of the nationwide Year of the Artist project, Screen and Screen Again aims to broaden the enjoyment and awareness of experimental film work through its exhibition in public spaces.

Exhibitions of film and digital media are held at:
Watershed Media Centre, 1 Canon's Road, Bristol BS1 5TX.
T: 0117 927 6444 F: 0117 921 3958

Film and video production, facilities and training are available at:
Picture This Moving Image, Spike Island Studios, 40 Sydney Row
Bristol BS6 6UH T: 0117 925 7010 F: 0117 925 7040

Meet the artist and project discussion at RSVP Bar, Bath on
21st May 2001 at 6.00 pm. For further details please contact
Jo Lanyon at Picture This, T: 0117 925 7010

Bristol: 26th March – 6th April 2001

Bradley Stoke Library, Sainsbury's Supermarket, Severnshed,
Watershed Media Centre Café/Bar, Belgo Bar

Gloucester: 9th April – 20th April 2001

Guildhall Arts Centre, Prema, Sainsbury's Supermarket,
Ski & Snow Centre

Exeter: 23rd April – 4th May 2001

Exeter Central Library, Mud Dock, Riverside Leisure Centre,
Sainsbury's Supermarket Pinhoe Road

Plymouth: 7th May – 18th May 2001

Plymouth Central Library, Theatre Royal, Sainsbury's
Supermarket Marsh Mills

Bath: 14th May – 25th May 2001

Bath Central Library, Timsbury Community Centre,
RSVP Bar, Shakespeare's Hairdressing, Bath Spa University
College Student Union.

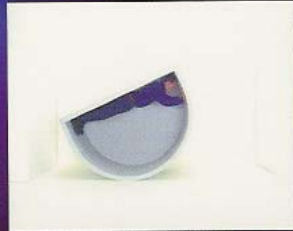
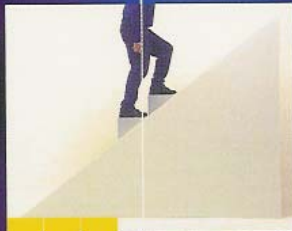
Project Promotion: Jo Phillip
Design: Northbank, Bristol



WATERSHED



BELGO



John Wood &
Paul Harrison
Device

John Wood & Paul Harrison: *Device* (3 mins) is a series of performance based experiments in which the human body is used as a tool to explore spatial boundaries. Using dead pan humour and a combination of modernist sculptural objects and everyday items the artists work together to produce amusing short videos. (Made in 1996)



Tony Hill
Holding the
Viewer

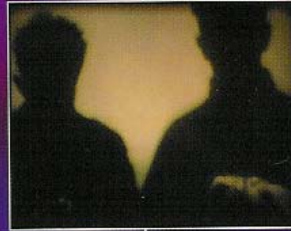
Tony Hill: *A Short History of the Wheel* (1 min) An exercise in visual relativity in the form of a journey through space and time with the wheel and *Holding the Viewer* (1 min) A cinematic roller-coaster ride at the hands of a performer who is literally holding the viewer on the end of a pole.



Adam Black
Untitled 1&2

Adam Black: *Untitled 1 & 2* (2 mins) Two short and gently witty videos that use time lapse and creative editing to capture the continuous energy of contemporary central London. The first scene shows ever flowing road traffic moving over an anonymous bridge and the second the changing skyline captured in the metal spokes of the London Eye.

StSngoin/NeuComission



Colin Andrews
I may be
some time

Colin Andrews: *I may be some time* (6 mins) recycles and re-works archive film shot by the painter Lawren Harris which documents a journey, by sea, to the Arctic. Direct bleaching techniques are used on the surface of the film to slowly erode the footage as the film progresses. As the snow-filled scape of the arctic emerges a perceptual confusion is generated between the whiteout created by the onset of a snowstorm and the blankness created by the removal of the image from the surface of the film.

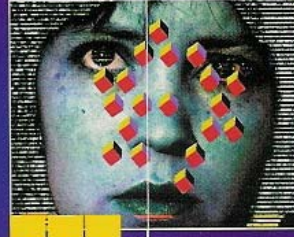
StSngoin/NeuComission



Lulu Quinn
Burst

Lulu Quinn: Burst (4.5 mins) comprises a series of nine individual portraits that have been intercut throughout the showreel. Individuals' facial expressions and raw emotions are frozen at a particular moment in time to disturbing or humorous effect.

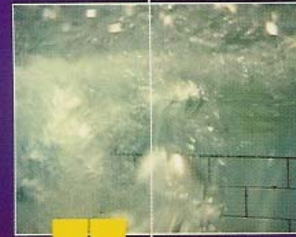
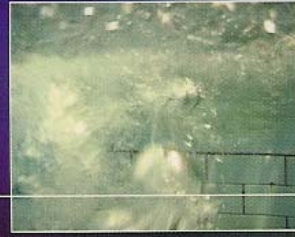
S65Ngain/NeuComission



Joe Magee
Kulture
Klinik

Joe Magee: Kulture Klinik (1 min) provides the viewer with a glimpse of some bizarre and complex therapy being advertised to those who desire a personality makeover. The digital animation interweaves a television ad-man with images of a Klinik patient undergoing treatment. The incorporation of remixed body movements. Braille text and revolving icons probes the human struggle to communicate.

S65Ngain/NeuComission



Philip Walker
Plunge Pool

Philip Walker: Plunge Pool (1.5 mins) continues the water based theme of the artist's previous monitor works. Walker keeps us in suspense before surprising us with an aquatic explosion in this elegantly composed and shot short video.

S65Ngain/NeuComission



Monika
Oechsler
Jump

Monika Oechsler: Jump (2.5 mins) explores the relationship and drama between a young man and two women as they are thrown together in the screen space. Filmic tension is built through repetition and close-ups of emotional and gestural details.

S65Ngain/NeuComission